



ekey fingerprint scanners
COMFORT MEETS DESIGN

MODERN TECHNOLOGY REDEFINES CONVENIENCE

AS UNIQUE AS A FINGERPRINT.

For more than 17 years, ekey has been developing both products and solutions that revolutionize entire industries.

The technical expertise, spirit of innovation, and commitment to quality of its dedicated staff are what set ekey apart as a company, and form the basis for future-oriented visions and the realization of extraordinary technologies.

In addition to functionality, we place great value on design. Our aim is to ensure that the technology blends discreetly into the architecture. Many well-known providers incorporate the ekey fingerprint scanner as early as the product design phase, and integrate it flawlessly.

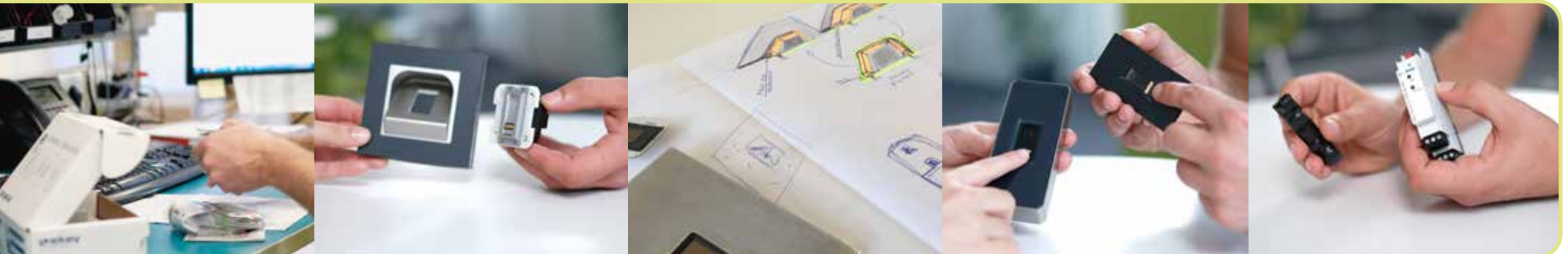
CERTIFIED QUALITY MADE IN AUSTRIA:

- Extensive production, manufacturing, and functional testing (zero tolerance)
- Testing for environmental and temperature resistance
- Vibration- and shock-tested
- Tested for penetration of water and mechanical parts
- Quality management system in accordance with EN ISO 9001:2015
- CE-compliant





*Our spirit of innovation and
commitment to quality make
us Europe's No. 1!*





YOUR FINGER. YOUR KEY.

ekey biometric systems – Europe's No. 1 for fingerprint access solutions.

Based in Linz, Austria, ekey is the European market leader for biometric access solutions. As a manufacturer and developer with the highest technological expertise and a patented software algorithm, we are a reliable partner for business in international markets. Both private households and leading companies, along with organizations such as fire and rescue services, have been putting their trust in the ekey fingerprint scanner for many years.

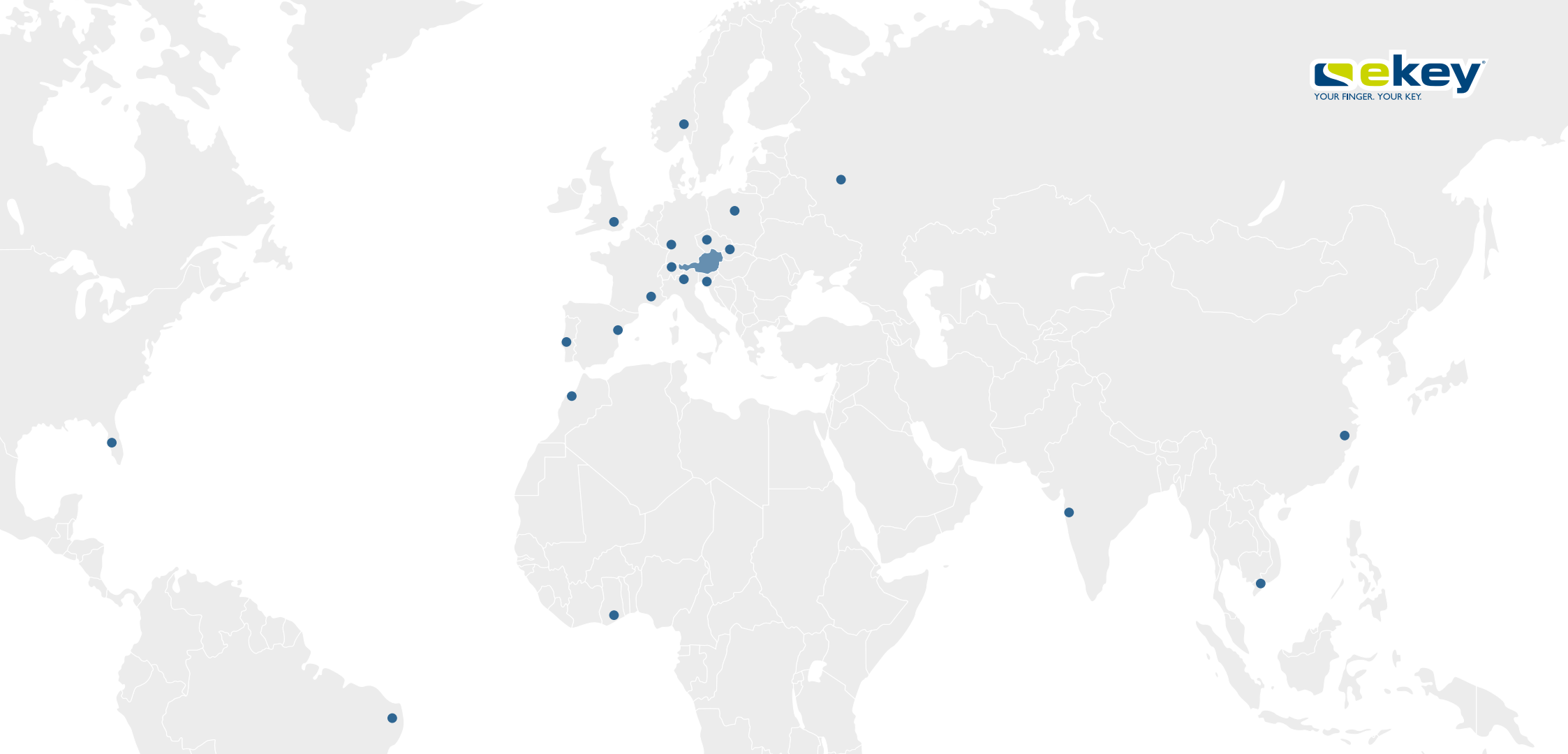
Internationality and global presence define ekey's brand.

ekey currently has over 100 employees at its 5 locations in Austria, Germany, Liechtenstein/Switzerland, Italy, and Slovenia, and exports its products to over 70 countries, which makes up 75% of its business. ekey's main sales markets include Spain, India, China and the USA, in addition to Austria, Germany, Switzerland, Slovenia, and Italy.



 Designed, developed
and made in Austria.





FIRST STEPS AND MILESTONES

ekey was founded in 2002 and is now Europe's No. 1 for fingerprint access solutions.



2004

ekey biometric systems Germany GmbH established, based in Nidderau near Frankfurt.



2006

ekey biometric systems Est., the branch office for Liechtenstein/Switzerland, founded in Vaduz. ekey becomes a Microsoft Gold Partner. The second ekey patent is granted.



2008

ekey lock, the set with fingerprint scanner and radio cylinder for easily retrofitting existing locks, is presented to the public.



2010

The fingerprint scanner variant OM, combined with various switch frames for built-in fitting in flush mount back boxes, is ready for mass production. The "new" FS integra for the door industry is presented. Shift to new capacitive sensor technology.



2002

Establishment of ekey biometric systems GmbH with the vision: **Biometrics for everyone!** The fingerprint scanner ekey home is developed.



2003

The wall-mounted fingerprint scanner Toca home is ready for mass production and should revolutionize the fingerprint scanner market.



2005

ekey net, the networked company access solution, is launched. Products are supplied to the first OEM partner (Schüco).

2007

Market introduction of the integra fingerprint scanner model for built-in fitting in the door leaf. Cooperation with various door manufacturers to offer the models ex works.



2009

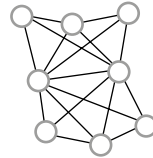
Design becomes increasingly important. A fingerprint scanner integrated into the door handle is brought to market in cooperation with the OEM customer FSB.





2012

ekey Italy established.
The fingerprint scanner WM 2.0 is brought to market with eight other innovations.
One of the leading German intercom manufacturers, Ritto, presents an ekey fingerprint scanner as an OEM product for the first time at the Light & Building trade fair in Frankfurt.



2014

Release of an optimized algorithm in terms of comfort and computing time.
Customer focus is emphasized according to the motto "We create enthusiastic customers".



2016

KNX system integration –
The in-house development of ekey KNX converters opens up the world of system integration and covers a wide range of applications.



2018

Crestron smart home solutions now also work with the ekey fingerprint scanner. ekey becomes an official Crestron Integration Partner and wins the Crestron Home Technology Award.

ekey online shop goes live (B2B and B2C)



2020

ekey bionyx is expanding – the networking of different systems allows new communication structures and business models.

New fingerprint scanner designs are developed.



2011

ekey Slovenia is founded for the East Adriatic region (Slovenia, Croatia, Bosnia, Serbia, Macedonia, Kosovo, Montenegro, Albania).



ekey multi, the multi-point access solution for fingerprint scanners, comes to market.



2013

A fingerprint scanner can be controlled with a smartphone app for the first time. The fingerprint scanner arte for integration in the door handle and ekey keypad 2.0 are launched.



2015

ekey receives the 2015 silver Protector Award.



2017

A new, compact control panel for doors is developed.

2019

With the new product ekey UNO rechargeable fingerprint scanner, wireless, ekey offers a practical fingerprint scanner solution for the do-it-yourself retrofitting market.

The first product line with an area sensor.



ekey receives the 2019 silver Protector Award for ekey uno.

The eighth ekey patent is granted.



2022



The quality management system at ekey Austria is certified on December 13, 2011 according to ISO 9001:2008 – inspected by TÜV Austria.

ekey receives the German Industry Innovation Award.



GOOD REASONS FOR USING AN EKEY FINGERPRINT SCANNER

More than 1 million satisfied users are the best possible recommendation for our products!

- USER CONVENIENCE AND MAXIMUM SECURITY
- CUSTOMIZED ACCESS CONTROL
- A WIDE RANGE OF INTEGRATION POSSIBILITIES
- EASY INSTALLATION AND ADMINISTRATION
- CONNECTION TO BUILDING CONTROL SYSTEMS
- EASY MAINTENANCE
- 5-YEAR QUALITY GUARANTEE



The ekey fingerprint scanner can be integrated individually:

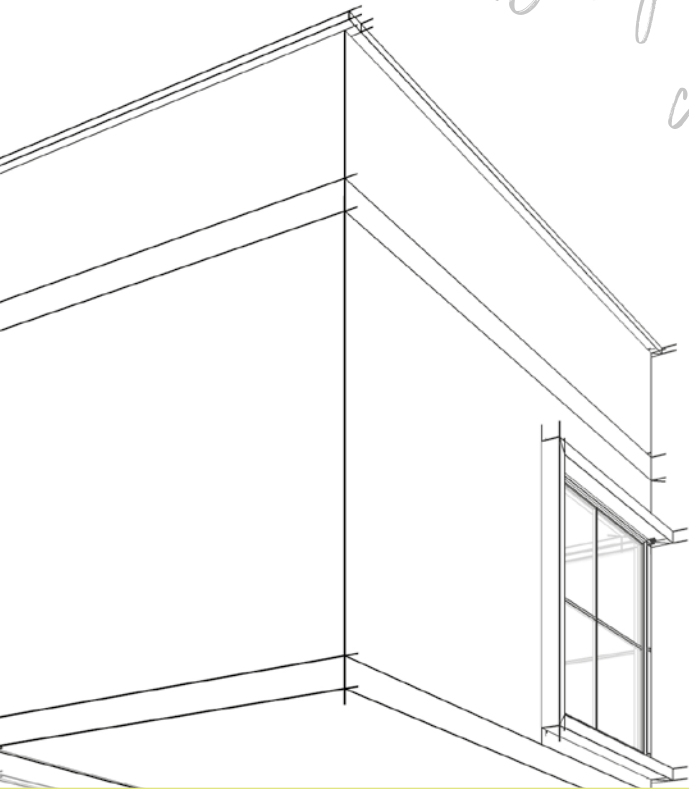
- Wall-mounted/outlet-mounted variants
- House doors
- Door handles
- Door stations
- Switch frames
- Mailbox systems

Quality-tested products from ekey – you can count on us!

Our high-quality components and extensive production, manufacturing, and functional testing guarantee that you get the best product on the market.

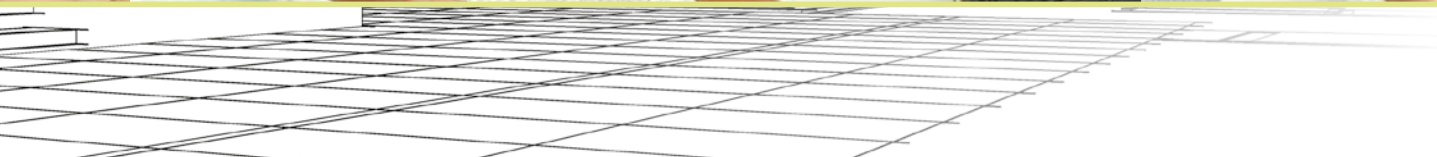


*Design, comfort, and security
combined in one fingerprint access system.*



” *After hundreds of years in use,
the key has served its time –
Now you literally have the
future in your hands!* “

Leopold Gallner
Dr. Leopold Gallner
CEO and owner
ekey biometric systems GmbH

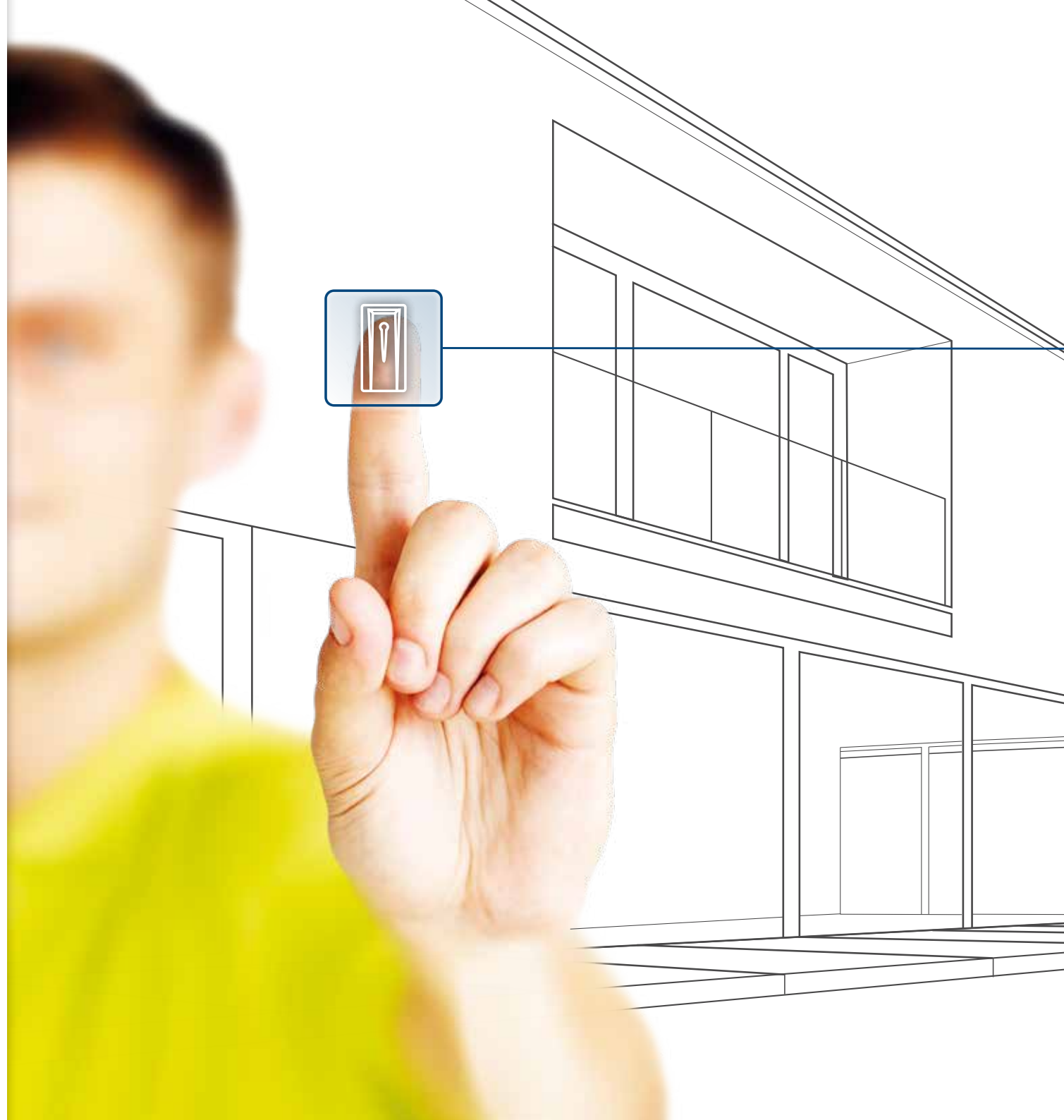


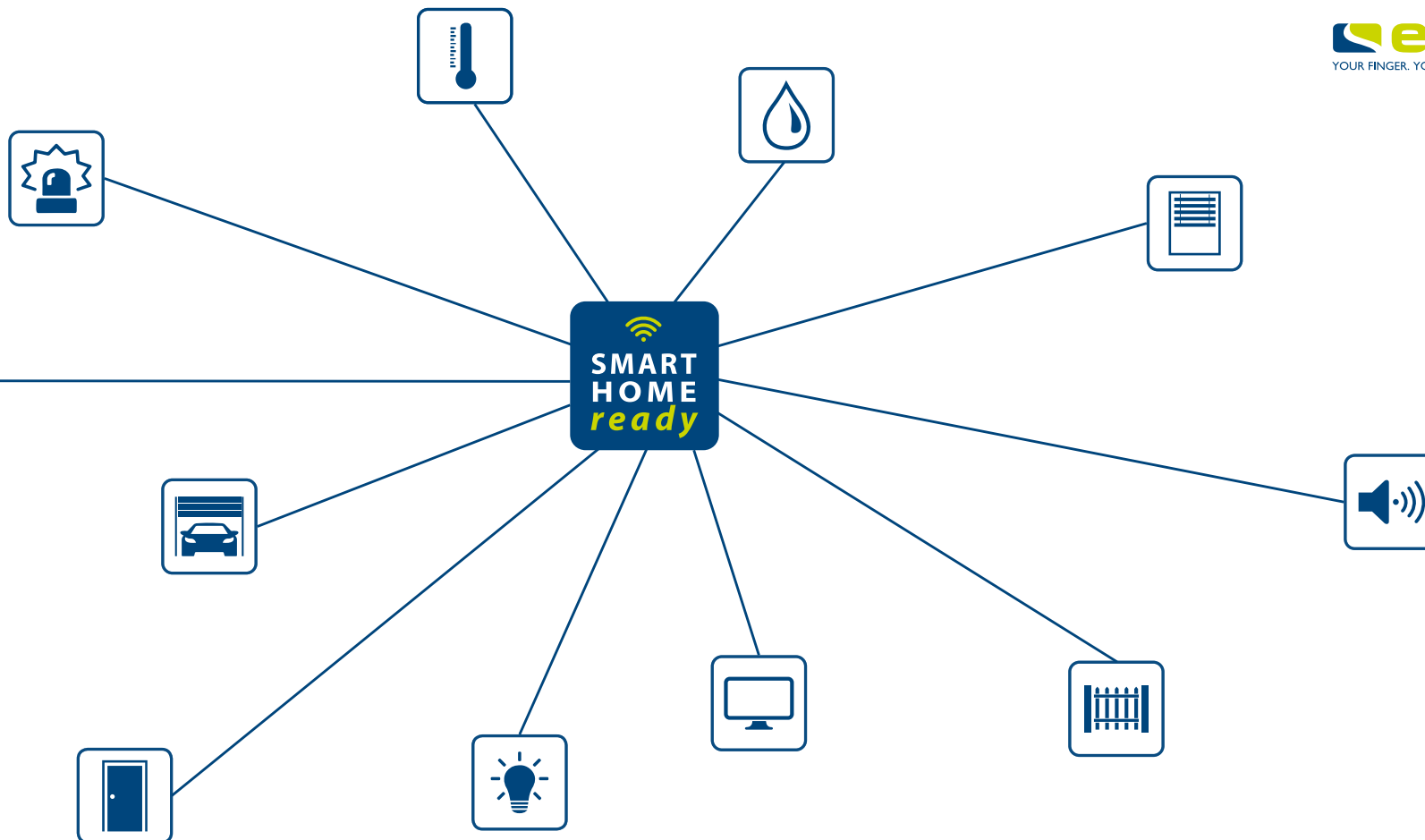
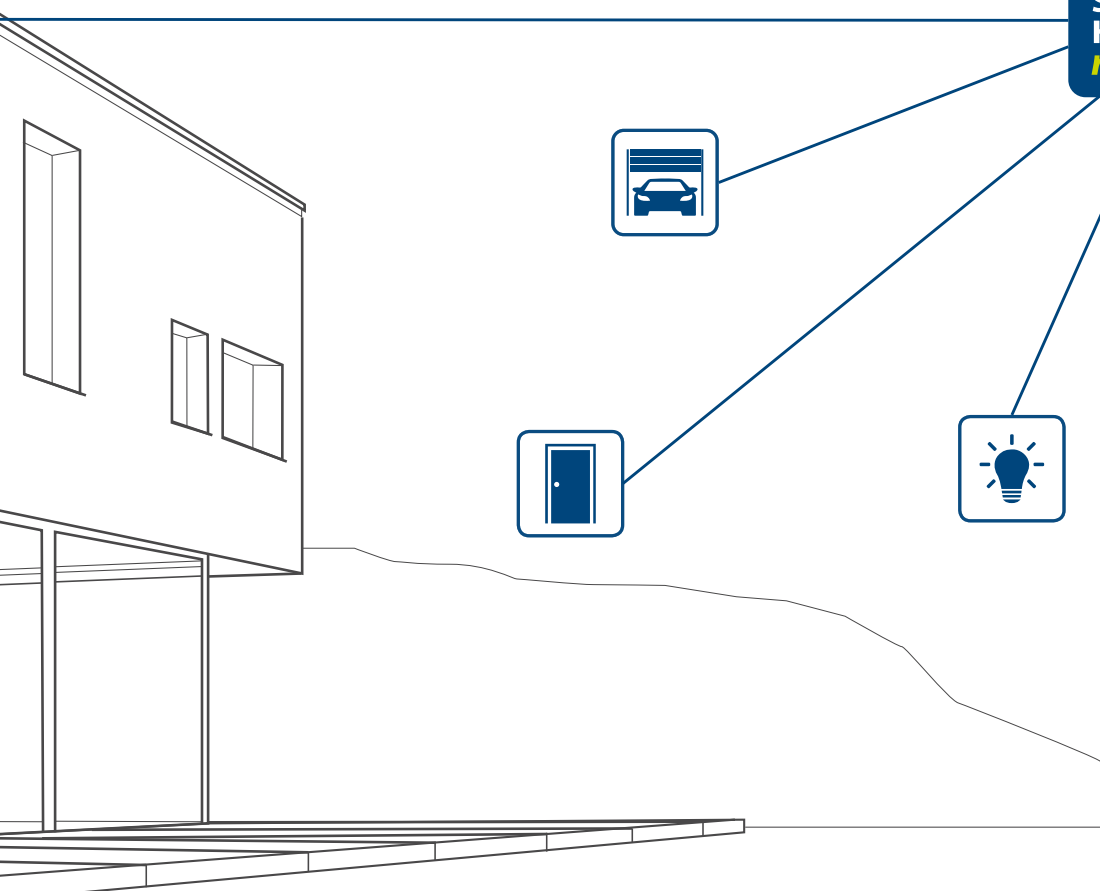
REAL SMART HOMES USE A FINGERPRINT SCANNER

AN EKEY FINGERPRINT SCANNER CAN DO MORE THAN JUST OPEN DOORS!

With the right ekey interface, your fingers activate individual actions through the building control system.*

- DOOR/GATE ACCESS CONTROL
- OPERATING THE ALARM SYSTEM
- SHUTTER/BLIND CONTROL
- INDIVIDUAL LIGHTING MOOD
- AUDIO SYSTEM CONTROL
- CUSTOMIZED SETTINGS
- POWER AND HEATING CONTROL
- AND MUCH MORE





**INTERFACES
FOR INTEGRATION INTO
BUILDING CONTROL
SYSTEMS**

KNX
PARTNER
KNX
FELLSMART.

LAN
BAB TECHNOLOGIE xsolution hmi MASTER
LOXONE SYMCAN iRidium mobile
everlink iHaus legrand INTEGRATED SOLUTIONS

FSX
BECKHOFF myGEKKO evon Smart Home
CRESTRON habitron

IRIAM GIRA SAVANT RTI
U+E Control4 CRESTRON

* The integration of the ekey fingerprint scanner into your building control system is done on an individual basis. Your advisor will be happy to go over the details.

ekey finger scanner integra



the sleek all-rounder with glass decor



The ekey finger scanner integra is the ideal solution for integration in and near the door. The elegant housing has a sleek, modern design and is available in stainless steel and glass. Thanks to the personalized color design, it can be perfectly adjusted to every customer taste and adapts flexibly to any surface and design specification.



**YOUR IDENTITY.
YOUR STYLE.**



ekey finger scanner integra

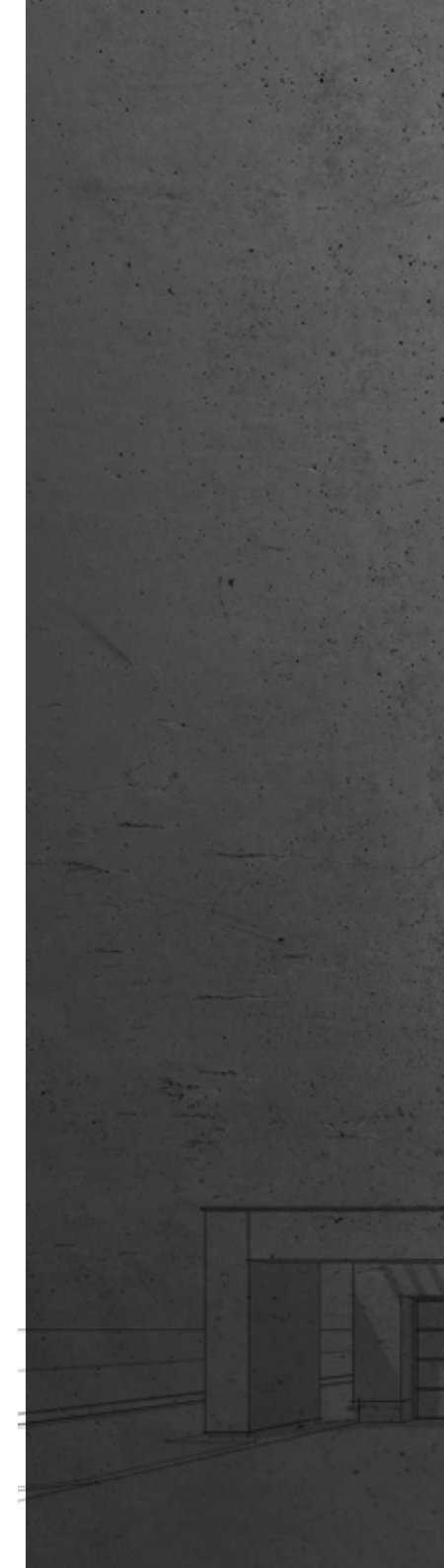


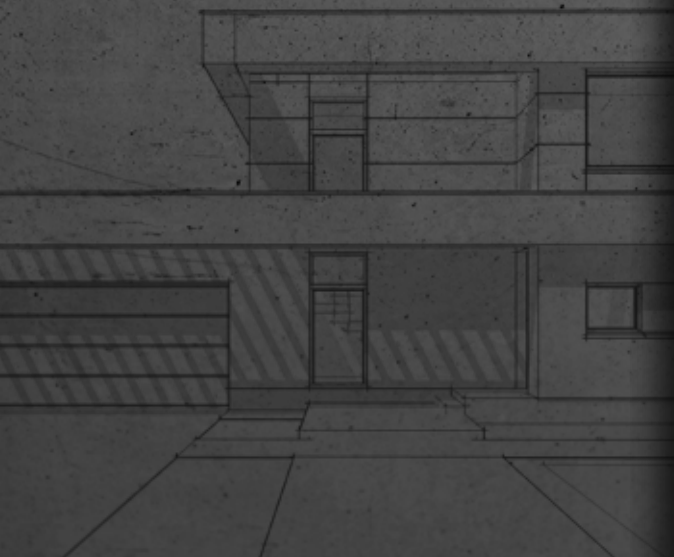
for mounting next to the door



With the ekey mounting frame FS integra, the fingerprint scanner can easily be mounted next to the door (or garage door). With this solution, ekey has put special emphasis on design and the elegant processing of high-quality materials.

On request, the mounting frame is also available complete with a bell module following the same design. If required, the status of the alarm system can also be displayed by LED.





ekey finger scanner OM



for integration into door stations and mailboxes



Well-known door station and mailbox manufacturers trust ekey's reliable products and innovative technologies. ekey fingerprint scanners can be elegantly integrated into a variety of designs.

bticino



ormet

Comelit

ELCOM.

FERMAX

ELVEX

KO(H)

2N



SYSTEMS
EPPIG

SIBIK
Wir schätzen schneller.

SIEDLE

RITTO

STR
ELEKTRONIK

Stentofon
Baudisch

GIRA

RENZ

TCS

wantec



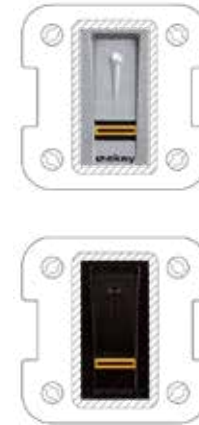
ekey finger scanner OM E



for integration into switch and design frames



The ekey finger scanner OM E is the ideal solution for leading manufacturers of various switch ranges and their designs. Combined with perfectly coordinated, high-quality decorative frames from ekey, it also offers flexible application possibilities indoors and outdoors.





ekey finger scanner arte



simple design for discreet integration



The ekey finger scanner arte model is the flagship product in terms of design in a small format. Well-known manufacturers of door handles in particular choose to integrate ekey's tiniest fingerprint access solution ex works.

With its elegant stainless steel finger swipe area, the ekey finger scanner arte has also been specially designed for flush built-in fitting in designer doors. Thanks to its slim and compact design, the fingerprint scanner can even be integrated discreetly into unusual door designs.

WERDING

spitzer
Beschlagmanufaktur

behle

HISKA

OBUK

RODENBERG
GESICHTER EINER TÜR

WSS

confurn
living solutions

HERMAT H

woelm.

HELM

KWS

WMA

adeco

Südmetall

FSB





ekey keypad integra

The code pad – an addition to the fingerprint scanner



The backlit, easy-to-use capacitive touchpad made of IMPAdur® special glass is available in anthracite, stainless steel gray, or white. Due to its slender mounting depth, it can be aesthetically integrated in and next to doors, just like the ekey finger scanner integra.



ekey keypad integra

for mounting next to the door



With the ekey mounting frame KP integra, the code pad can easily be mounted next to the door (or even the garage door). With this solution, ekey has put special emphasis on design and the elegant processing of high-quality materials.

On request, the mounting frame is also available with a bell module following the same design. If required, the status of the alarm system can also be displayed by LED.





© ekey biometric systems GmbH - 802699 / 082019

Austria (headquarters)
 ekey biometric systems GmbH
 Lunzerstraße 89
 A-4030 Linz
 T: +43 732 890 500 – 0
 E: office@ekey.net

Germany
 ekey biometric systems Deutschland GmbH
 Industriestraße 10
 D-61118 Bad Vilbel
 T: +49 6187 90696 – 0
 E: office@ekey.net

Switzerland & Liechtenstein
 ekey biometric systems Est.
 Landstrasse 79
 FL-9490 Vaduz
 T: +41 71 560 5480
 E: office@ekey.ch

Adriatic East region
 ekey biometric systems d.o.o.
 Vodovodna cesta 99
 SI-1000 Ljubljana
 T: +386 1 530 94 89
 E: info@ekey.si

Italy
 ekey biometric systems Srl.
 Via Copernico 13/A
 I-39100 Bolzano
 T: +39 0471 922712
 E: italia@ekey.net

USA
 ekeyUSA Systems, LLC
 1950 Northgate Blvd. STE D2
 US-34234 Sarasota, FL
 T: +1 941 870 4757
 E: info@ekeyUSA.com

www.ekey.net

ekey biometric systems

